



# Aster Domo

## 1-4 Houseplans

Get more from life!

[www.instabuilt.com](http://www.instabuilt.com)



# Advanced Technology

A house built with high quality materials



## Modul & Panel Solution

Our panel and module housing solutions offer sustainability, affordability and efficiency.

By seamlessly integrating advanced construction technologies and design flexibility, they are shaping a more sustainable and accessible future for housing. Designed with meticulous attention to detail and premium materials, these homes offer an unparalleled level of sophistication.



## Façade Options

Elevate your home's aesthetic with our diverse facade options, allowing you to personalize your residence with style and character.



HPL Panel  
& Wood



Putz  
& Wood



Wooden  
Façade

# Instabuilt Construction Technology



## **Panel Technology**

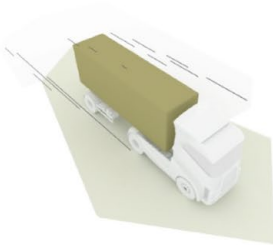
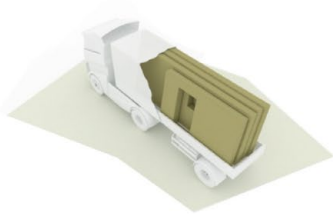
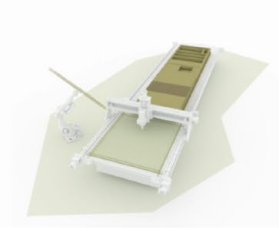
60% Finished in our factory



## **Module Technology**

98% Finished in our factory

# Panel Technology - How it works?



Fabricate

Load

Transport

Assembly



# Module Technology - How it works?



Fabricate



Factory Assembly



Transport



On-site Assembly



# Construction System

Instabuilt has a large range of construction elements that are suited for a variety of projects. With internationally recognized certificates of performance - CE / ETA - and many well-known materials and brands we bring you a piece of work that only the finest engineers can bring to life.



## External Wall 1

- 1.HPL Façade
- 2.Vertical timber batten
- 3.Diffusing Foil
- 4.Horizontal timber batten
- 5.Thermoinsulation
- 6.Timber Studs
- 7.Thermoinsulation
- 8.Vapour Barrier
- 9.OSB/3
- 10.OSB/3
- 11.Timber batten
- 12.Thermoinsulation
- 13.OSB/3
- 14.Gypsum fiberboard



## External Wall 2

- 1.Wooden Façade
- 2.Vertical timber batten
- 3.Diffusing Foil
- 4.Horizontal timber batten
- 5.Thermoinsulation
- 6.Timber Studs
- 7.Thermoinsulation
- 8.Vapour Barrier
- 9.OSB/3
- 10.OSB/3
- 11.Timber batten
- 12.Thermoinsulation
- 13.OSB/3
- 14.Gypsum fiberboard



## Interior Wall

- 1.Gypsum fiberboard
- 2.OSB/3
- 3.Timber Studs
- 4.Thermoinsulation
- 5.OSB/3
- 6.Gypsum fiberboard F

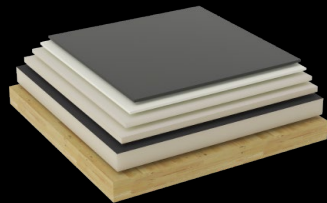
## Floor

- 1.Parquet
- 2.Foil under parquet
- 3.Cement particleboard - Betonyp
- 4.Thermoinsulation
- 5.Thermoinsulation
- 6.Cross Laminated Timber
- 7.Timber Frame
- 8.Thermoinsulation
- 9.Cement particleboard - Betonyp



## Roof

- 1.Hydroinsulation
- 2.Geotextil
- 3.Thermoinsulation for inclination
- 4.Thermoinsulation for inclination
- 5.Thermoinsulation
- 6.Cross Laminated Timber (Visible)





## Improve the **quality of living**

Our goal is to make change happen for a livable and sustainable world of the future. Living communities that are healthy lifestyles and resilient infrastructure that benefits all people.

From small to large projects our goal is to improve the quality of living by creating well-designed spaces that create a connection and interaction with nature and humans.

In the Future of Living, we build instantly volumetric solutions all around the world





# Pick and Design

Masterplanning is the strategic blueprint for creating vibrant, functional communities that stand the test of time. It's about envisioning the future and building it with precision and purpose.

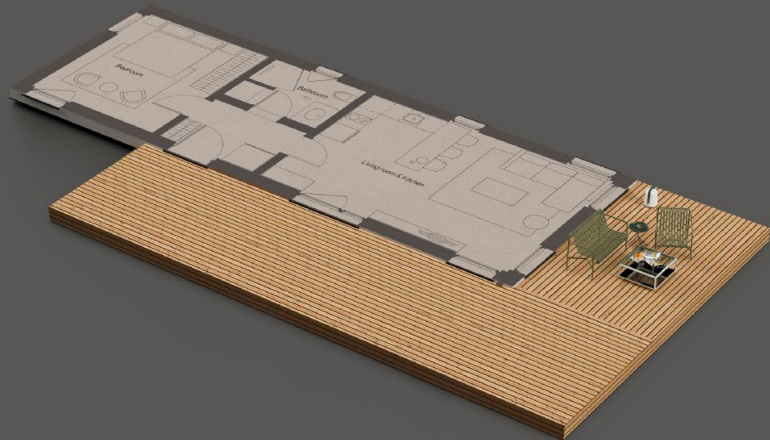


# Aster Domo Flexy 1 Bedroom



# Aster Domo Layout

## 1 Bedroom



Building Gross area:  $62.7 \text{ m}^2 / 674.9 \text{ ft}^2$

Building Net area:  $50.6 \text{ m}^2 / 543.3 \text{ ft}^2$

Building Footprint area :  $115.2 \text{ m}^2 / 1240.2 \text{ ft}^2$

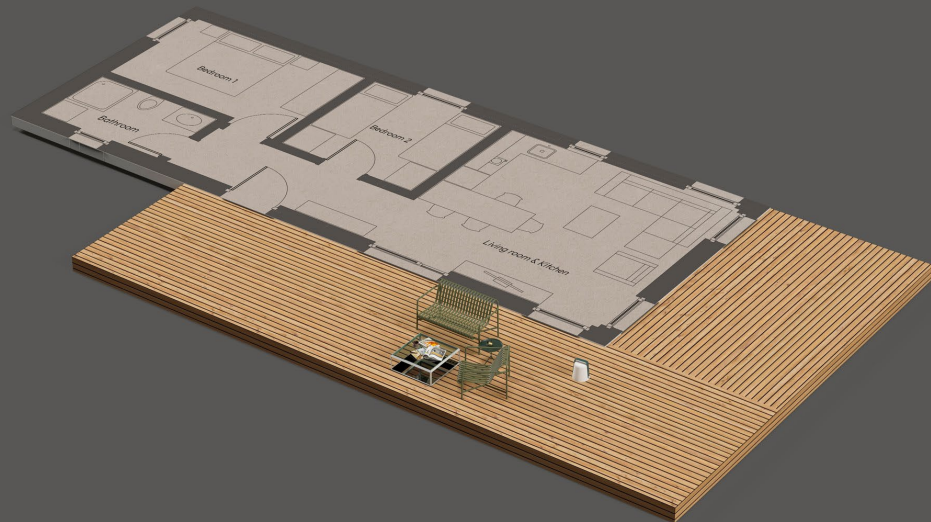
Terrace g/n area :  $52.5 \text{ m}^2 / 565.3 \text{ ft}^2$

# Aster Domo Flexy 2 Bedroom



# Aster Domo Layout

## 2 Bedroom



Building Gross area: 69.9 m<sup>2</sup> / 752.4 ft<sup>2</sup>

Building Net area: 57.2 m<sup>2</sup> / 615.6 ft<sup>2</sup>

Building Footprint area : 124.1 m<sup>2</sup> / 1335.9 ft<sup>2</sup>

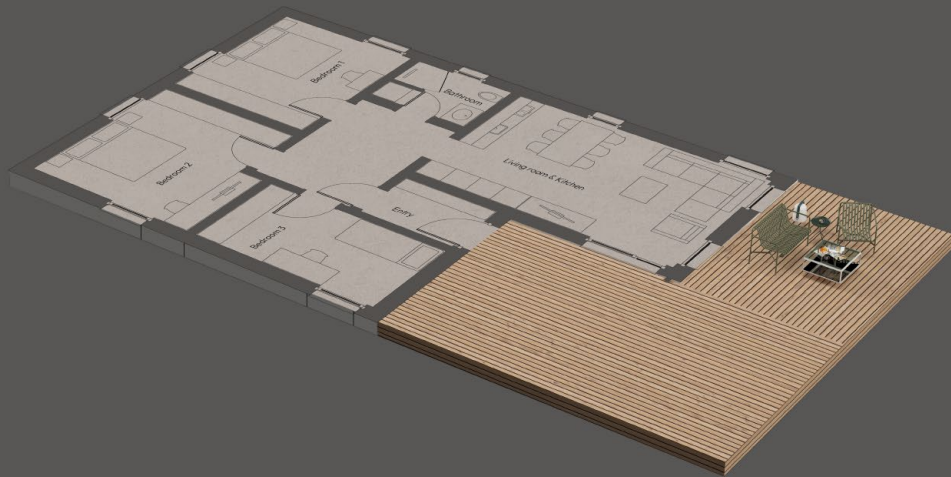
Terrace g/n area : 54.2 m<sup>2</sup> / 583.5 ft<sup>2</sup>

# Aster Domo Flexy 3 Bedroom



# Aster Domo Layout

## 3 Bedroom



Building Gross area: 104.5 m<sup>2</sup> / 1125.3 ft<sup>2</sup>

Building Net area: 89.5 m<sup>2</sup> / 964.4 ft<sup>2</sup>

Building Footprint area : 151.8 m<sup>2</sup> / 1634.8 ft<sup>2</sup>

Terrace g/n area : 47.3 m<sup>2</sup> / 509.5 ft<sup>2</sup>

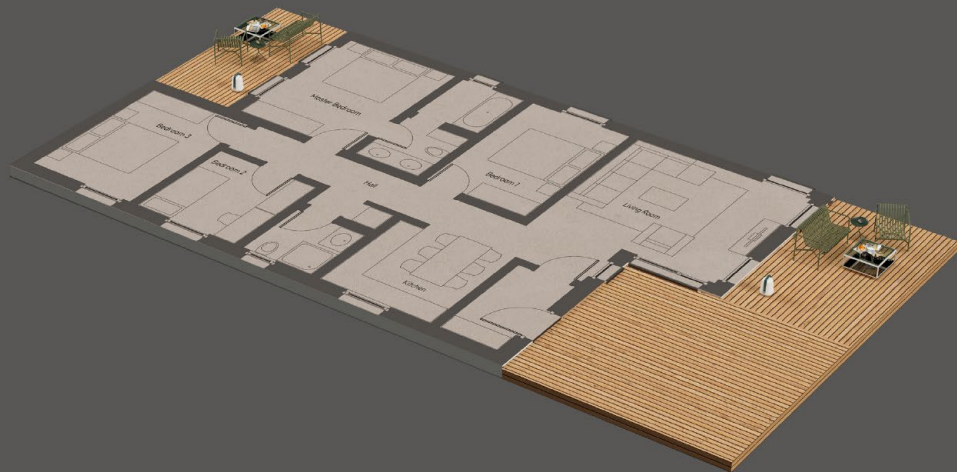
# Aster Domo Flexy 4 Bedroom





# Aster Domo Layout

## 4 Bedroom



Building Gross area: 122.3 m<sup>2</sup> / 1316.4 ft<sup>2</sup>

Building Net area: 105.6 m<sup>2</sup> / 1136.3 ft<sup>2</sup>

Building Footprint area : 172.4 m<sup>2</sup> / 1855.8 ft<sup>2</sup>

Terrace g/n area : 50.1 m<sup>2</sup> / 539.4 ft<sup>2</sup>



*the future of living*

[sales@instabuilt.com](mailto:sales@instabuilt.com)

Pristina - Mitrovica Highway KM12

Milloseve, Obiliq, 10000 Kosova

[www.instabuilt.com](http://www.instabuilt.com)