



Residential Living

1-8 Houseplans

Get more from life!

www.instabuilt.com

the future of living



Advanced Technology

A house built with high quality materials



Modul & Panel Solution

Our panel and module housing solutions offer sustainability, affordability and efficiency.

By seamlessly integrating advanced construction technologies and design flexibility, they are shaping a more sustainable and accessible future for housing. Designed with meticulous attention to detail and premium materials, these homes offer an unparalleled level of sophistication.



Façade Options

Elevate your home's aesthetic with our diverse facade options, allowing you to personalize your residence with style and character.



HPL Panel
& Wood



Putz
& Wood



Wooden
Façade

Instabuilt Construction Technology



Panel Technology

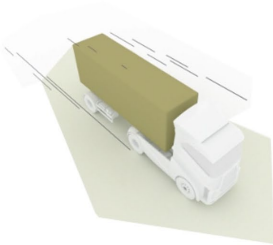
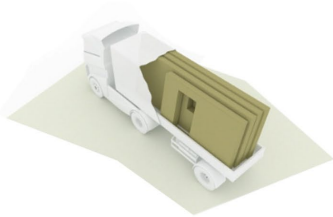
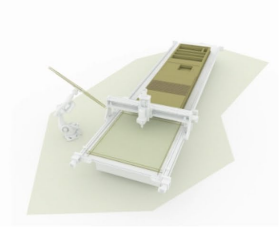
60% Finished in our factory



Module Technology

98% Finished in our factory

Panel Technology - How it works?



Fabricate

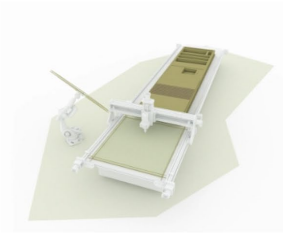
Load

Transport

Assembly



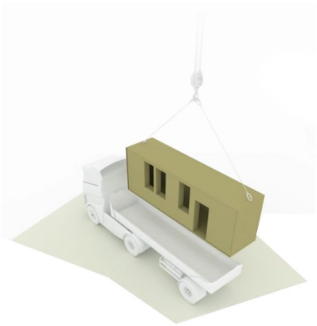
Module Technology - How it works?



Fabricate



Factory Assembly



Transport



On-site Assembly



Construction System

Instabuilt has a large range of construction elements that are suited for a variety of projects. With internationally recognized certificates of performance - CE / ETA - and many well-known materials and brands we bring you a piece of work that only the finest engineers can bring to life.



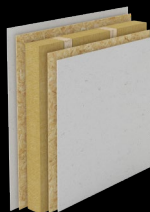
External Wall 1

- 1.HPL Façade
- 2.Vertical timber batten
- 3.Difusing Foil
- 4.Horizontal timber batten
- 5.Thermoinsulation
- 6.Timber Studs
- 7.Thermoinsulation
- 8.Vapour Barrier
- 9.OSB/3
- 10.OSB/3
- 11.Timber batten
- 12.Thermoinsulation
- 13.OSB/3
- 14.Gypsum fiberboard



External Wall 2

- 1.Wooden Façade
- 2.Vertical timber batten
- 3.Difusing Foil
- 4.Horizontal timber batten
- 5.Thermoinsulation
- 6.Timber Studs
- 7.Thermoinsulation
- 8.Vapour Barrier
- 9.OSB/3
- 10.OSB/3
- 11.Timber batten
- 12.Thermoinsulation
- 13.OSB/3
- 14.Gypsum fiberboard



Interior Wall

- 1.Gypsum fiberboard
- 2.OSB/3
- 3.Timber Studs
- 4.Thermoinsulation
- 5.OSB/3
- 6.Gypsum fiberboard F

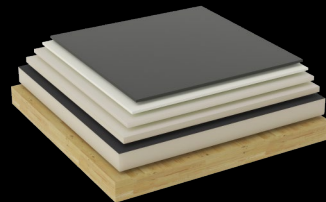
Floor

- 1.Parquet
- 2.Foil under parquet
- 3.Cement particleboard - Betonyp
- 4.Thermoinsulation
- 5.Thermoinsulation
- 6.Cross Laminated Timber
- 7.Timber Frame
- 8.Thermoinsulation
- 9.Cement particleboard - Betonyp



Roof

- 1.Hydroinsulation
- 2.Geotextil
- 3.Thermoinsulation for inclination
- 4.Thermoinsulation for inclination
- 5.Thermoinsulation
- 6.Cross Laminated Timber (Visible)





Improve the **quality of living**

Our goal is to make change happen for a livable and sustainable world of the future. Living communities that are healthy lifestyles and resilient infrastructure that benefits all people.

From small to large projects our goal is to improve the quality of living by creating well-designed spaces that create a connection and interaction with nature and humans.

In the Future of Living, we build instantly volumetric solutions all around the world



Pick and Design

Masterplanning is the strategic blueprint for creating vibrant, functional communities that stand the test of time. It's about envisioning the future and building it with precision and purpose.



Residential Living Fly 1 Bedroom

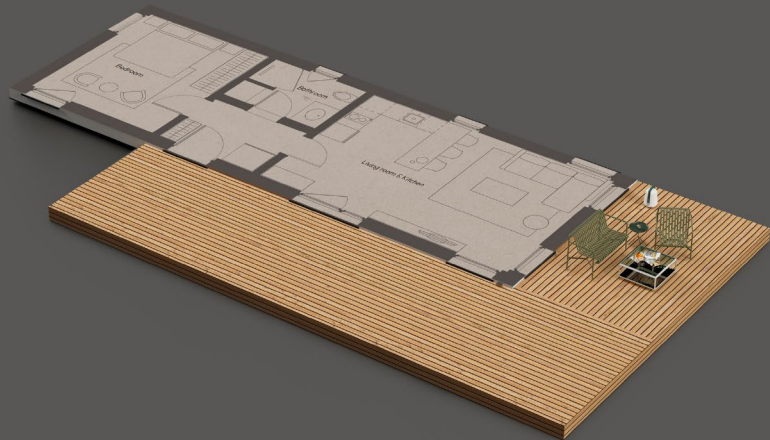


Residential Living Flexy 1 Bedroom



Residential Living Layout

1 Bedroom



Building Gross area: $62.7 \text{ m}^2 / 674.9 \text{ ft}^2$

Building Net area: $50.6 \text{ m}^2 / 543.3 \text{ ft}^2$

Building Footprint area : $115.2 \text{ m}^2 / 1240.2 \text{ ft}^2$

Terrace g/n area : $52.5 \text{ m}^2 / 565.3 \text{ ft}^2$

Residential Living Fly 2 Bedroom

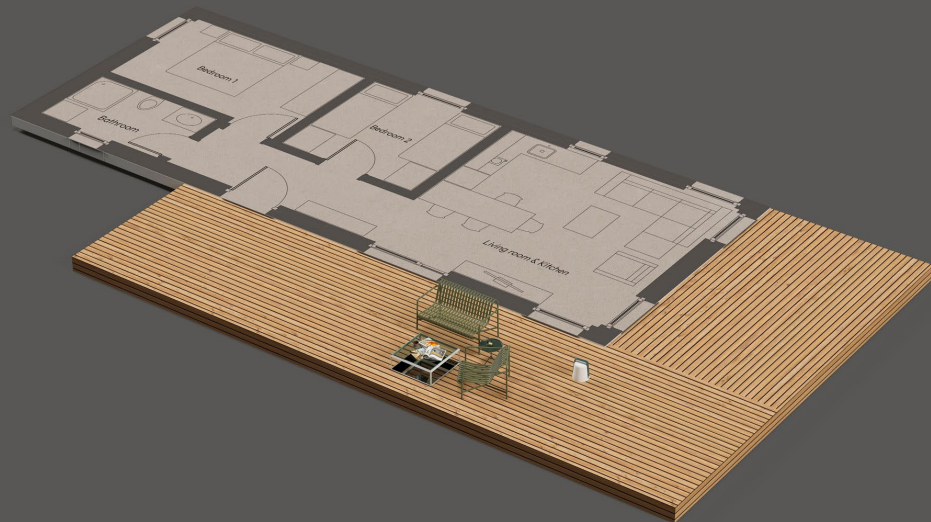


Residential Living Flexy 2 Bedroom



Residential Living Layout

2 Bedroom



Building Gross area: 69.9 m² / 752.4 ft²

Building Net area: 57.2 m² / 615.6 ft²

Building Footprint area : 124.1 m² / 1335.9 ft²

Terrace g/n area : 54.2 m² / 583.5 ft²

Residential Living Fly 3 Bedroom

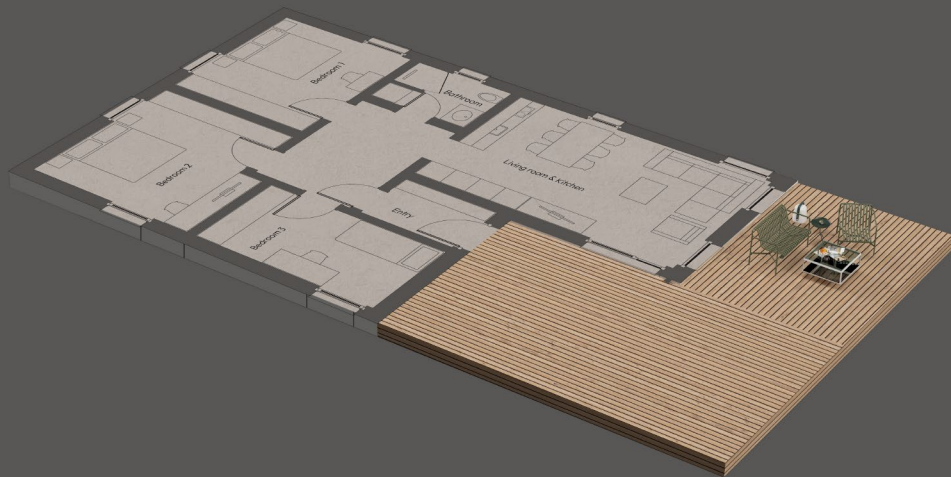


Residential Living Flexy 3 Bedroom



Residential Living Layout

3 Bedroom



Building Gross area: 104.5 m² / 1125.3 ft²

Building Net area: 89.5 m² / 964.4 ft²

Building Footprint area : 151.8 m² / 1634.8 ft²

Terrace g/n area : 47.3 m² / 509.5 ft²

Residential Living Fly 4 Bedroom

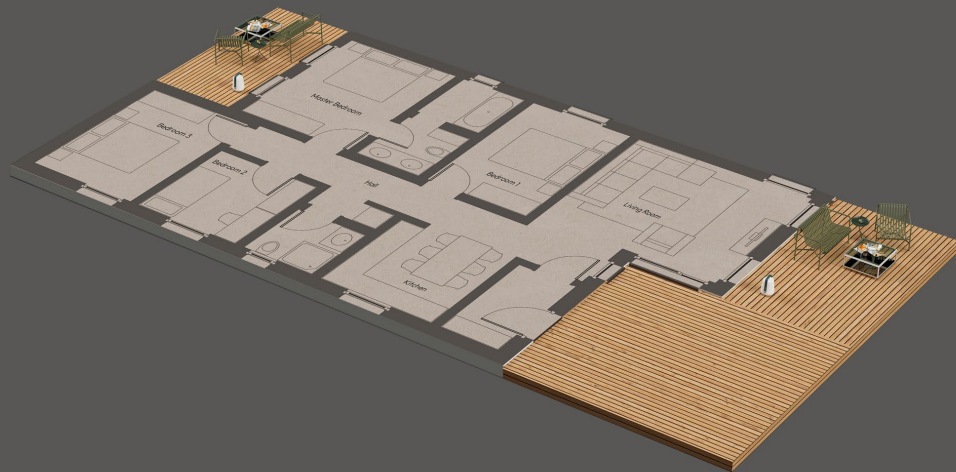


Residential Living Flexy 4 Bedroom



Residential Living Layout

4 Bedroom



Building Gross area: 122.3 m² / 1316.4 ft²

Building Net area: 105.6 m² / 1136.3 ft²

Building Footprint area : 172.4 m² / 1855.8 ft²

Terrace g/n area : 50.1 m² / 539.4 ft²

Residential Living Tiny Fly

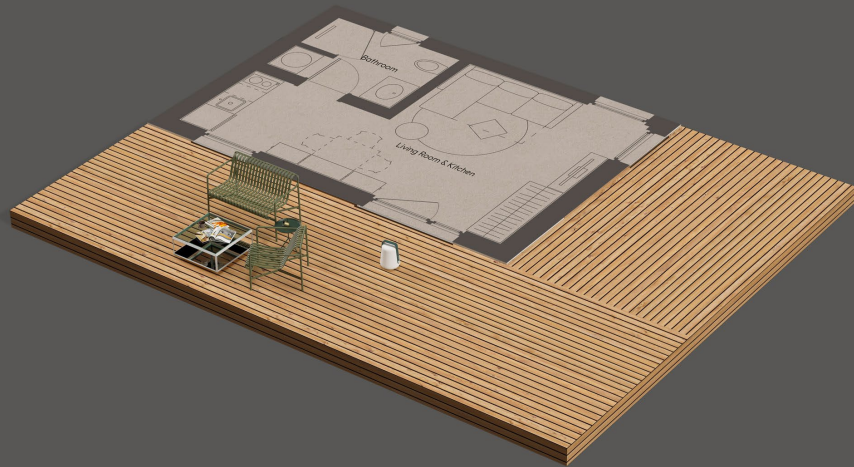


Residential Living Tiny Flexy



Residential Living Layout

Tiny 1 Bedroom



Building Gross area: **32.8 m² / 352.9 ft²**

Building Net area: **24.8 m² / 267.1 ft²**

Building Footprint area : **76.7 m² / 825.5 ft²**

Terrace g/n area : **43.9 m² / 472.6 ft²**

Residential Living Tiny Fly

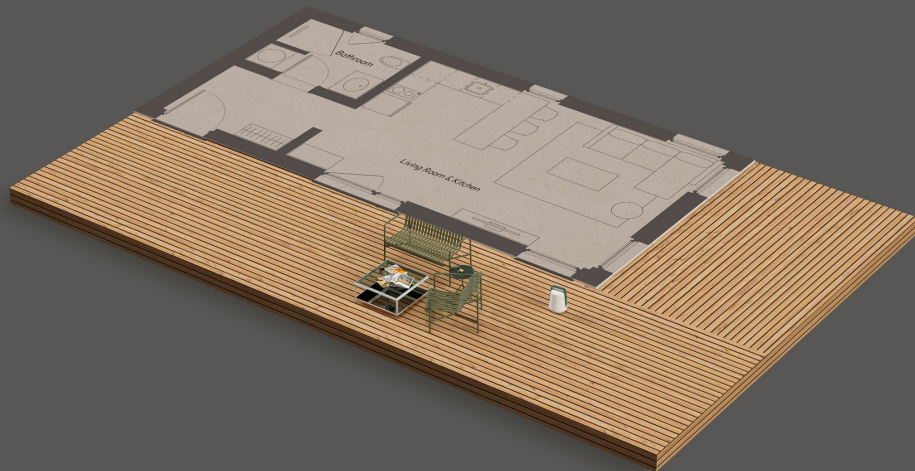


Residential Living Tiny Flexy



Residential Living Layout

Tiny 1 Bedroom



Building Gross area: 45.2 m² / 487.0 ft²

Building Net area: 35.5 m² / 383.4 ft²

Building Footprint area : 96.9 m² / 1043.6 ft²

Terrace g/n area : 51.7 m² / 556.6 ft²

Residential Living Tiny Fly

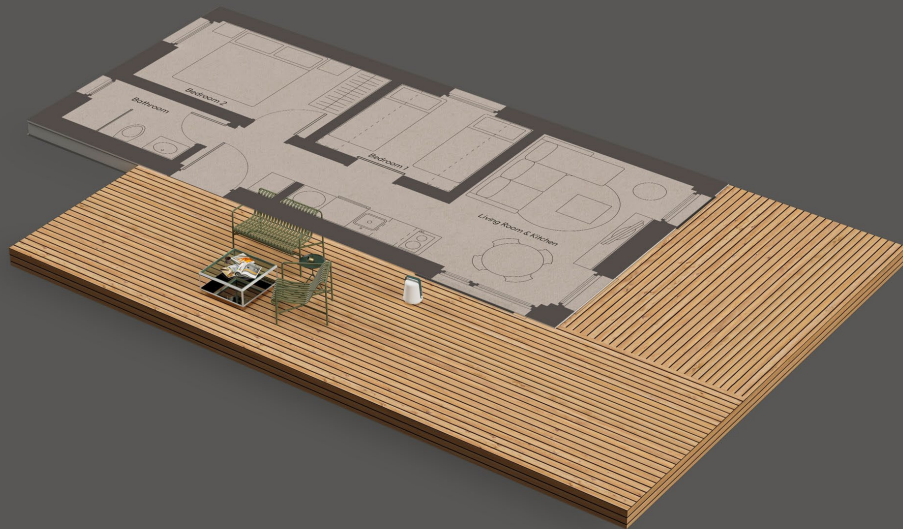


Residential Living Tiny Flexy



Residential Living Layout

Tiny 2 Bedroom



Building Gross area: 48.1 m² / 517.7 ft²

Building Net area: 38.4 m² / 412.5 ft²

Building Footprint area : 94.7 m² / 1019.2 ft²

Terrace g/n area : 46.6 m² / 501.5 ft²

Residential Living Tiny Fly

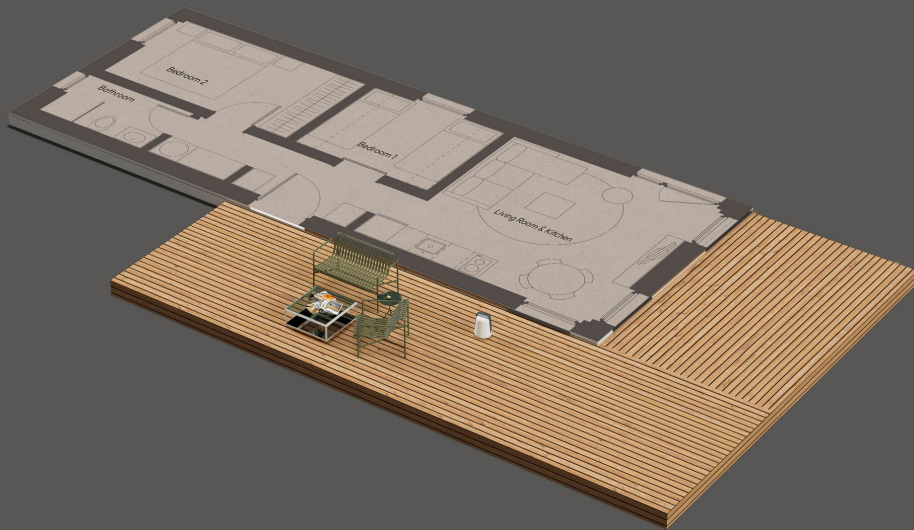


Residential Living Tiny Flexy



Residential Living Layout

Tiny 2 Bedroom



Building Gross area: 57.9 m² / 623.4 ft²

Building Net area: 46.8 m² / 503.2 ft²

Building Footprint area : 101.6 m² / 1191.1 ft²

Terrace g/n area : 52.7 m² / 567.7 ft²

Metropol Living



Danish Essence



Lakeside serenity





the future of living

sales@instabuilt.com

+1 346 200 3290 | +49 72 312 059 970

www.instabuilt.com

Pristina - Mitrovica Highway KM12
Milloseve, Obiliq, 10000 Kosova