



European Design House

Build your dream life experience
with off-site construction!

www.instabuilt.com

the future of living



Eco-Friendly Community

Living in a spacious community, with houses that are built with eco-friendly materials, we can guarantee you'll love living in a community like that.



An aerial view of a modern residential development. The houses are multi-story, rectangular buildings with flat roofs and large windows. They are arranged in a grid pattern around a central street. The houses have a mix of colors, including white, grey, and red. There are trees and green spaces between the houses. A road with a crosswalk and a car is visible in the foreground. The overall scene is bright and sunny.

We build
Communities

Faster, more affordable, and instant pieces like the Bio Wall Panel are changing the way we think about home design. The houses are made of prefabricated eco walls, which means that they can be assembled in a few days or even hours

explore

A modern, two-story modular house is shown at night, illuminated from within. The house features a mix of light and dark grey exterior panels, large windows, and a balcony with a glass railing. It is situated on a waterfront with a wooden dock in the foreground where two kayaks are parked. The scene is reflected in the calm water, and the sky is dark with some stars visible.

High quality and Mindfulness

We take your living standards a step further with quality structures and comfort, offering you affordable, durable, environmentally friendly prefabricated houses.

All isolations and installations are made by experts in the field and delivered to you in a shorter time compared to reinforced concrete houses and you can use it safely for many years with its solid structure. Our modular houses are designed to make your life easier and better for you.

Eco, Bio & Green

Our modular houses are designed to make your life easier and better for you.



The Future of **Living**

The size of the homes is designed to comply with all applicable laws of transportation- of course, this also depends on the final destination and the relevant rules and regulations, but we take care of it.

Any of these models that you chose can become your home within 90 days, while the assembly process takes only 1 day to be fully completed on the job site. From small to large projects our goal is to improve the quality of living by creating well-designed spaces that create a connection and interaction with nature and humans.

From small to large projects our goal is to improve the quality of life by creating well-designed spaces that create a connection and interaction with nature and people.





discover

Sustainable building materials and appliances result in little or no ecological footprint on the environment.

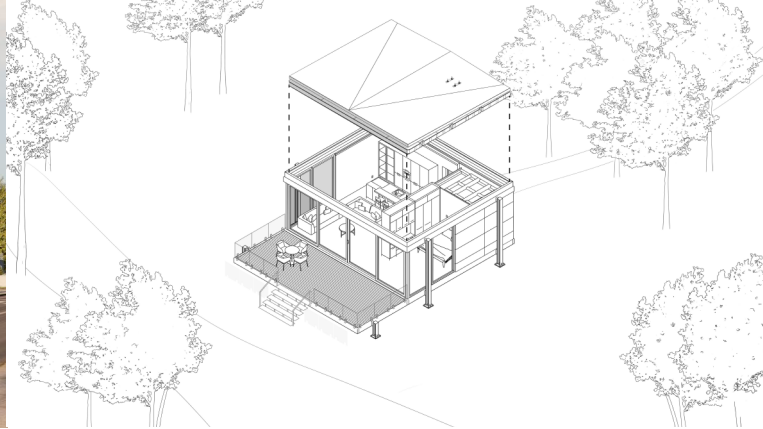
These types of houses can be built with a large range of construction elements that are suited for a variety of projects. With internationally recognized certificates of performance - CE / ETA - and many well-known materials and brands we bring you a piece of work that only the finest engineers can bring to life.

Green peace

Green peace in the field of green buildings. Our Traditional Houses allow you to connect with nature and live with eco-sustainable building materials with non-toxic finishes. Green can bring fresh air and a healthier environment.

“Combining build quality, sustainability, and efficiency, each one of our modular building systems provides a flexible solution to any public or private sector.”





Quiet space for thinking, organizing, and masterminding in the community of Traditional Houses.

Based on personal style or client configurations, the elevation or facade system can be adapted. For all types of Traditional Houses, our architects used the best materials for construction and finishing.

“With Traditional House, design capabilities are infinite and for those wanting to customize their home design, the only limitation is one’s level of imagination and budget.”

Traditional houses can be assembled quickly and efficiently in all seasons. Traditional houses’ panel strength enables them to withstand strong wind. With the number of natural disasters on the increase, this is a crucial advantage of this house.

Our rapid assembly process means that a Traditional House could be move-in ready in less than half the time of a traditional site-built structure. All pieces and panels are loaded and shipped to the selected site anywhere in the world.

Dortmund

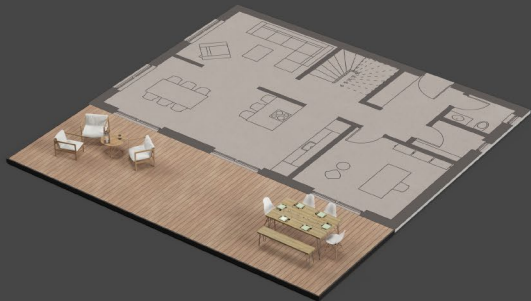
Slope Roof & Flat Roof

Hannover house can come in slope roof & flat roof.
All of our houses can be equipped with an insulation system suitable for 4 seasons, can be produced in accordance with all climatic conditions.



Dortmund House

Total area (brutto) 162.50 m² - 1748.4 ft²



Ground Floor 81.25 m² - 877.2 ft²



First Floor 81.25 m² - 877.2 ft²

Berlin

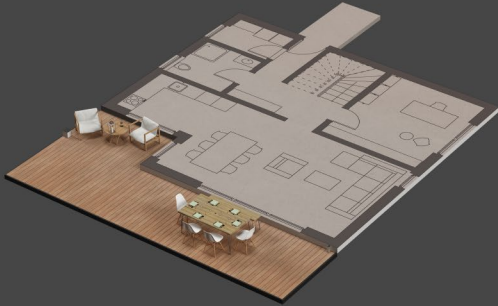
Slope Roof & Flat Roof

Berlin house can come in slope roof & flat roof. A sloped roof has always been a popular choice for many homeowners because of its stylish design and practicality.

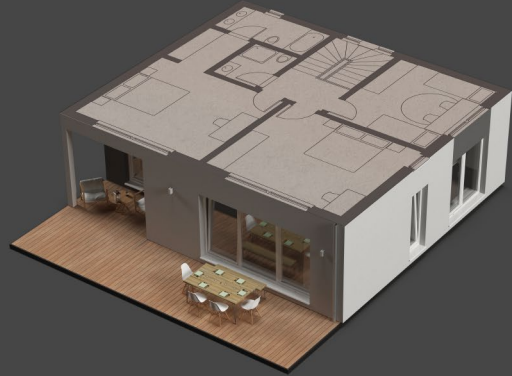


Berlin House

Total area (brutto) 163.09 m² - 1775.4 ft²



Ground Floor 78.99 m² - 850.2 ft²



First Floor 84.10 m² - 905.2 ft²

Stuttgart

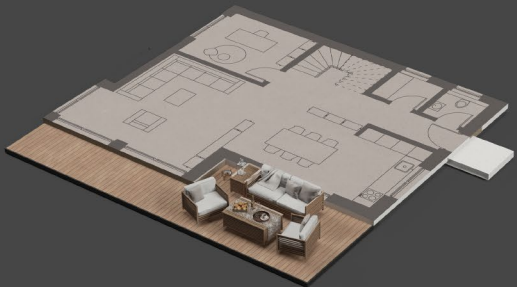
Slope Roof & Flat Roof

Stuttgart house can come in slope roof & flat roof. The architectural design of this model is the best of designed houses giving you and your family plenty of room to grow.



Stuttgart

Total area (brutto) 186.17 m² - 2003.9 ft²



Ground Floor 93.06 m² - 1001.6 ft²



First Floor 93.14 m² - 1002.5 ft²

Bayern

Slope Roof & Flat Roof

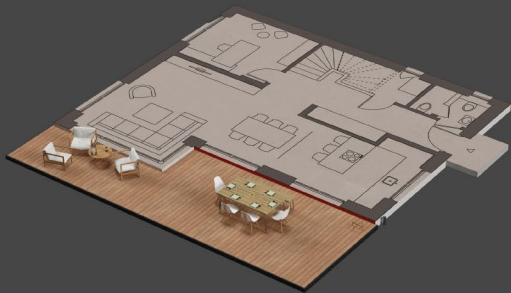
Berlin house can come in slope roof & flat roof.

Living in a new way of building these traditional homes you have the opportunity to create something special and unique, because of its dual- function that can serve two purposes or things that can fold or pack away.



Bayern House

Total area (brutto) 187.56 m² - 2018.8 ft²



Ground Floor 88.83 m² - 956.15 ft²



First Floor 98.73 m² - 1062.7 ft²

München

Slope Roof & Flat Roof

München house can come in slope roof & flat roof. These roofs preserve energy because they allow natural ventilation between the outer roof layer and the interior flat layer.

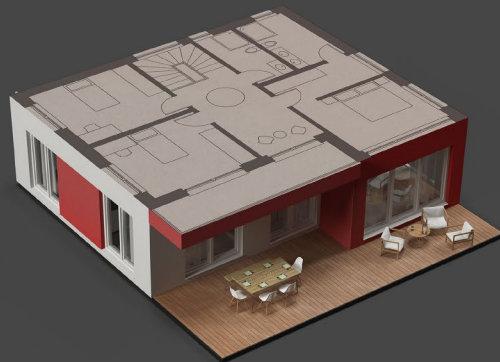


München House

Total area (brutto) 187.56 m² - 2018.8 ft²



Ground Floor 93.36 m² - 1004.9 ft²



First Floor 102.82 m² - 1106.7 ft²

Hannover

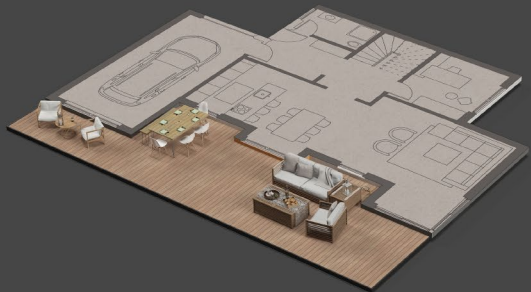
Slope Roof & Flat Roof

Hannover house can come in slope roof & flat roof. Our architects used the best materials for construction and finishing. Moreover, the acoustics and sound reflection is also taken under consideration during house planning.



Hannover House

Total area (brutto) 223.85 m² - 2409.5 ft²



Ground Floor 110.85 m² - 1193.1 ft²



First Floor 112.50 m² - 1210.9 ft²

 INSTABUILT

The future of living

www.instabuilt.com / info@instabuilt.com
+383 38 600 615 / +49 72 312 059 970
Prishtina - Mitrovica Highway KM12
Millosheve, Obiliq, 10000 Kosova