



Aster Domo

Two Bedroom

Get more from life!

www.instabuilt.com

the future of living



Freestanding concept

Aster Domo is built with the freestanding concept and does not cause damage to the environment where it is built. It is 100% eco-bio green, with certified materials, and also with the KFW40 energy coefficient.



Aster Domo 2 Bedroom

The 69.8 m² is our regular home design, as it is very comfortable with 1 large living room with a kitchen, a hall, two bedrooms, and a large bathroom.



Brutto space 69.8 m²

Brutto space 751 ft²

Assemble in 3 hours

A house made with energy-efficient technology, and biomaterials, it is made from one unit, two cubes, and can be assembled only in three hours.

Volumetric Solution

This type of construction is going to deliver you a project on budget, as scheduled, and in less time than the other construction types.

It is fully customizable as you prefer. From layouts to materials, each module can be designed to work for you. Add the bonus to all of this it takes only 90 days from order time to your job site and only 3 hours to assemble.





Improve the **quality of living** with Aster Domo

Our goal is to make change happen for a livable and sustainable world of the future. Living communities that are healthy lifestyles and resilient infrastructure that benefits all people.

From small to large projects our goal is to improve the quality of living by creating well-designed spaces that create a connection and interaction with nature and humans.

In the Future of Living, we build instantly volumetric solutions all around the world





Climate is not a problem for these homes, as they are built with very highly energy-efficient wall structures.

Off-site construction yields high-quality products and this sort of fabrication is eco-friendly by using resources wisely, and efficiently and it recycles many resources and materials.

Green peace

Our homes are built to be much more resistant to natural disasters and fluctuations in climate, they are spacious, personalized to the buyer, and can be constructed in a significantly shorter timeframe than traditionally constructed homes.

"Move in to your new lifestyle, with our comfort living, with unique design, high efficiency, and high quality, Aster Domo"



Different Façade

We can produce different customization options for homes that best fit the environment. Choose from three high-quality facade materials, white edition, black edition, and wood edition to design the exterior look of your own home.



Customize Options

Black & Wood



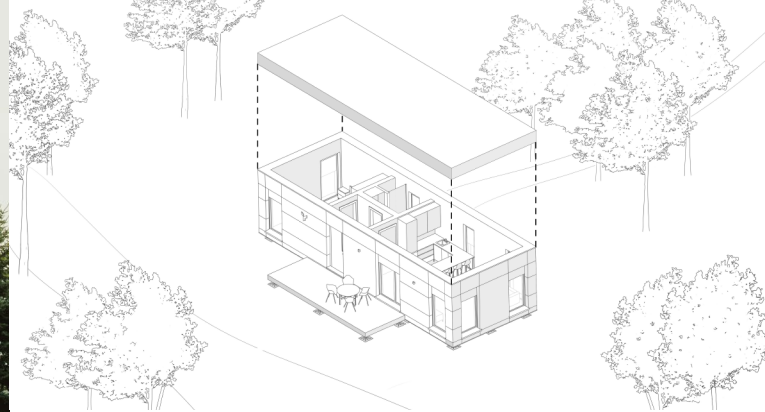
White & Wood



Wood



anywhere



We have merged technology and mobility to make it possible to create sustainable communities of the future with off-site construction (modular, pre-fab, panelized), worldwide in any location.

We have created these future homes that can be adaptable nearly anywhere in the world, they are more environmentally friendly, as well as tougher to mother nature's vengeance.

We live modular

Whether you prefer a bold rich look or a vibrant bright area,
we have a palette to suit any style.





If you want more surface and function for a home office or maximize the space for a studio, the interior has an adaptable, open floor plan

All the furniture is made by our own brand-named Stella Furniture. There are millwork couches, sitting areas, and everything you need to experience the luxury of limitless options and live your life.

“Our open floor plan allows furniture configuration to meet your needs”



With this furniture, design capabilities are infinite, and for those wanting to customize, the only limitation is one level of imagination and budget.

“Whether you prefer a bold rich look or a vibrant bright area, we have a palette to suit any style”



No matter what 'home' means to you, Aster is the place we call home. It's the place where we eat, the place we spend time with friends and family, where we meditate, and the future that many people dream of.

If you ever imagined sleeping in the mountains or the lakeside in an open space but protected from the weather, Aster gives you the original idea of wooden panels on the walls, ceiling, and floor, giving the possibility of living in a healthier way.

Discovery

Aster is the future and the starting place of love, hope and dreams.

dream



Living in communities is healthy
lifestyles and peace of mind.

Our goal is to improve the quality of living by creating
well-designed spaces that create a connection and
interaction with nature and humans.



Aster Domo

Two Bedroom Alphabet

A.

Construction

B.

Assembly

C.

Add-ons

D.

Transport

F.

Foundation

L.

Landscape

P.

Permitting

A. Construction

Construction
package includes:

Exterior Walls

Floor

Roof

Interior Wall

Bathroom

Plumbing

Electrical

External Joinery

the future of living

Get more from life!

One unit, two cubes ready in 3 hours. Assembled anywhere in the world, and you can start living/using it on the same day it arrives.



Construction System

Instabuilt has a large range of construction elements that are suited for a variety of projects. With internationally recognized certificates of performance - CE / ETA - and many well-known materials and brands we bring you a piece of work that only the finest engineers can bring to life.



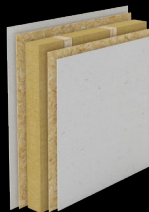
External Wall 1

- 1.HPL Façade
- 2.Vertical timber batten
- 3.Difusing Foil
- 4.Horizontal timber batten
- 5.Thermoinsulation
- 6.Timber Studs
- 7.Thermoinsulation
- 8.Vapour Barrier
- 9.OSB/3
- 10.OSB/3
- 11.Timber batten
- 12.Thermoinsulation
- 13.OSB/3
- 14.Gypsum fiberboard



External Wall 2

- 1.Wooden Façade
- 2.Vertical timber batten
- 3.Difusing Foil
- 4.Horizontal timber batten
- 5.Thermoinsulation
- 6.Timber Studs
- 7.Thermoinsulation
- 8.Vapour Barrier
- 9.OSB/3
- 10.OSB/3
- 11.Timber batten
- 12.Thermoinsulation
- 13.OSB/3
- 14.Gypsum fiberboard



Interior Wall

- 1.Gypsum fiberboard
- 2.OSB/3
- 3.Timber Studs
- 4.Thermoinsulation
- 5.OSB/3
- 6.Gypsum fiberboard F

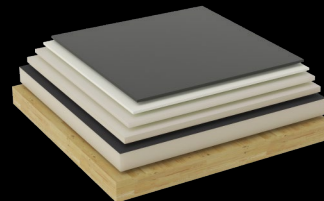
Floor

- 1.Parquet
- 2.Foil under parquet
- 3.Cement particleboard - Betonyp
- 4.Thermoinsulation
- 5.Thermoinsulation
- 6.Cross Laminated Timber
- 7.Timber Frame
- 8.Thermoinsulation
- 9.Cement particleboard - Betonyp



Roof

- 1.Hydroinsulation
- 2.Geotextil
- 3.Thermoinsulation for inclination
- 4.Thermoinsulation for inclination
- 5.Thermoinsulation
- 6.Cross Laminated Timber (Visible)





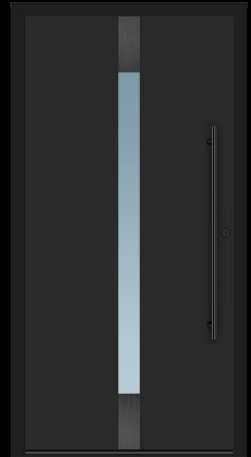
Door

Made of aluminum, with several design options, Aster Domo front door offers maximum security, energy efficiency, and noise reduction.

Door Details

Features:
Smart Lock system in the door, the latest
integrated security technology by Assa Abloy and Yale

Dimensions:
W - 100 cm H - 220 cm





Windows PVC

We have used 3-layer windows which have better shape stability and long life. They offer flexibility, efficiency, and high standards in terms of comfort and security.

Windows Details

Color:

Antracid (out) - White (in)

Feature:

Three-layer glass 52mm





Interior Doors

Aster Domo has solid wood interior doors that are stable and abundant wood fiber material.

Doors Details

Dimensions:
W - 90 cm H - 216 cm
Material:
MDF





Floor

Wood is a product of nature – each tree has its own structure and individual color combination, also the flooring wood that was used in this home may come in different colors.

Floor Details

Type of wood:
Oak Inof wvisible
Grade:
Espressivo
Surface texture:
Brushed
Floor heating:
Suitable





Electrical – Lighting

In Aster Domo, you will find it easy to enhance the look and feel of any space in your home with our selection of lighting.

Spotlight Details

Overall length:
55.0 mm

Diameter:
51.0 mm

Ambient temperature range: -20...+40 °C





Bathroom Elements

Aster Domo bathroom is equipped with high-quality and well-designed products with the latest technologies which offer you the reliability you deserve.

Shower Set Details

Features:

Concealed Thermostat with 3 Valves

Grohe Rapido Smartbox

Silverflex Shower Hose





Bathroom Elements

Aster Domo bathroom is equipped with high-quality and well-designed products with the latest technologies which offer you the reliability you deserve.

Free Standing WC Details

Installation:
Free-Standing

Material:
Ceramic



Bathroom extract fan





Bathroom Elements & Cabinet

Aster Domo bathroom is equipped with high-quality and well-designed products with the latest technologies which offer you the reliability you deserve.

Millwork Sink Closet

Dimensions:
41x80x51 cm

Material:
MDF 18mm

Colors:

■ Champagne ■ Terracotta
■ Chrome Green ■ Midnight
■ Traffic White



Bathroom Faucet Detail

Color:
Chrome

Flow:
1.0 GPM (3.8 L/min)





Bathroom Elements

Aster Domo bathroom is equipped with high-quality and well-designed products with the latest technologies which offer you the reliability you deserve.

Water Heater Closet

Dimensions:
128x70x45 cm

Material:
MDF 18 mm

Colors:

■ Champagne ■ Terracotta
■ Chrome Green ■ Midnight
■ Traffic White



Washer Closet

Dimensions:
91x70x70 cm

Material:
MDF 18 mm

Colors:

■ Champagne ■ Terracotta
■ Chrome Green ■ Midnight
■ Traffic White



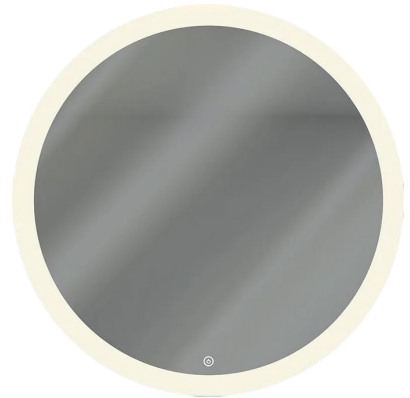


Bathroom Elements

Aster Domo bathroom is equipped with high-quality and well-designed products with the latest technologies which offer you the reliability you deserve.

Mirror Details :

Features :
LED light



A large, white, rectangular modular building unit is being hoisted by a yellow crane. The unit has large windows and is being positioned over a foundation of concrete pads. Several workers in high-visibility vests are visible on the ground and on the unit. The background shows trees and a clear sky.

B. Package Assembly

Assembly
package includes:

Assembly team

Tools and Crane

the future of living

C. Add-ons

Add-ons
package includes:

Deck

Kitchen

Appliances

Millwork

Sofa & Bed

Mechanical system

Jalousine

Fundaments

the future of living



Kitchen – Stella Furniture

Stella Furniture is built in every detail that offers you greater flexibility in the kitchen. The metal legs enable the furniture to have a faster assembly process.

Kitchen Details

Dimensions:
250x191x280 cm

Material:
MDF 18 mm

Colors:
■ Champagne ■ Terracotta
■ Chrome Green ■ Midnight
■ Traffic White

Legs with stainless steel
profile 20x20mm





Kitchen Table

Stella Furniture is built in every detail that offers you greater flexibility in the kitchen. The metal legs enable the furniture to have a faster assembly process.

Kitchen Table Details

Dimensions:

94x 75x 198 cm

Legs with stainless

steel profile 40x40mm

Batto bar & counter Stool

Dimensions:

54 x 54 x 94 mm

Material:

Leather & Metal

Colors:

■ Brown □ Black





Kitchen Faucet & Sink

Sink faucet offer exciting new features and enhanced functionality designed to provide ease of use and years of trouble-free operation.

Faucet Details

Colors:

■ Black

Material:

Aluminum



Sink Details

Colors:

Black Anthracite Rock Grey Alu Metallic

White Jasmine Champagne Tartufo Coffe

Features:

Waste kit with space-saving pipe

Fixing Kit

3 ½" InFino basket strainer





Appliances

German quality appliances, manufacturing premium quality kitchens such as dishwashers, microwaves, ovens, washing machines, and fridges.

Oven



Fridge

Dishwasher





Appliances

German quality appliances, manufacturing premium quality kitchens such as dishwashers, microwaves, ovens, washing machines, and fridges.

Cooktop



Kitchen Hoods





Blum Mechanism

With the Blum mechanism, you can implement your creative furniture ideas. They have everything for the opening and closing of lift systems, pull-outs, and doors. With the right motion technologies, this becomes even more convenient.

Compact Blumotion 39c/38c Details

Features:

- BLUMOTION integrated into the hinge cup
- Deactivation switch for small/light doors
- Overload safety features
- One-piece wraparound hinge
- 1/2" cup depth
- Less minimum reveal



Soft-closing Details

Features:

- Soft-closing Feature For Clip Top And Clip Hinges
- Offers The Same Quality Of Motion As Drawer System With Blumotion
- Automatically Adjusts To The Closing Force Of The Door
- Simple Attachment To The Hinge Arm
- Designed For Use With Blum Clip Hinges Only
- Nickel-plated Steel And Gray Nylon





Sofa Danish & Italian Design

We have the perfect leather sofa and glass table for you in German quality. Search by size and color to customize the space that should be warm, supple, and last for a lifetime.

Sofa Details

Dimensions:

76x217x90 cm

Material:

FSC wool 100%

Foam:

High resilience fire retardant foam





Side Table & Armchair

We have the perfect leather sofa and glass table for you in German quality. Search by size and color to customize the space that should be warm, supple, and last for a lifetime.

Table Details

Dimensions:

62.5 x 40 cm

Material:

Metal

Foam:

High resilience fire retardant foam



Armchair Details

Color:

Brown

Material:

Leather and cotton

Foam:

High resilience fire retardant foam





TV Stand

This Modern Solid Wood TV Stand is from our brand furniture, low profile, which has 2 roomy cabinets and adds style and function to your space.

Tv Stand Details

Dimensions:

76x217x90 cm

Material:

FSC wood 100%

High resilience fire retardant foam

Foam:

Colors:

■ Champagne ■ Terracotta

■ Chrome Green ■ Midnight

■ Traffic White





Stella Bed & Wardrobe

The wonderful softness of the Natuzzi bed can be perceived at first glance. Looking at the headboard, it is easy to imagine two pillows joined together providing ultimate comfort.

Bed Details

Dimensions:
103 x 198 x 238 cm (H x W x D)

Features:
Wooden frame
Upholstered headboard and frame

Upholstery:
Premium Fabric and Italian Top Grain Leather



Bedroom closet Details

Dimensions:
250x180x60 cm

Material:
MDF 18mm





Tripod wooden floor lamp

The lamp is integrated with high-quality, which is durable and aesthetic. It's sturdy design makes it wobble free and safe to have around children and pets.

Tripod wooden lamp Details

Dimensions:
50x30 cm

Wood veneered 180 cm PVC
cable with an on/off switch





Deck

A solid exotic wood decking without visible screws that blends in perfectly with the exceptional décor of the template. Our deck is a completely wood system with 100% vetedy timber.

Deck Details

Deck timber detail

High durability

Not vulnerable to lyctus beetle attack

Low impregnability





Jalousie

Aster Domo has innovative blinds, that let you adjust the light softly. Blinds help you set the tone for lighting in your home while adding a sophisticated splash of style.

Jalousie Details

Color:

Antracid

Material:

Aluminium





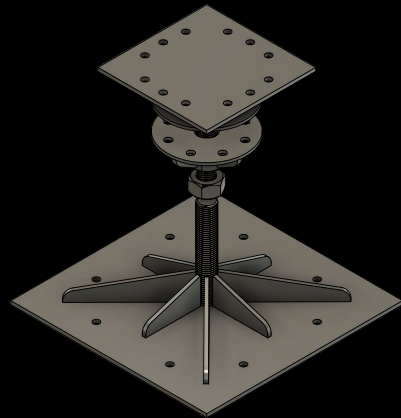
Fundaments

The fundaments used in this house are innovative and with strong structure. They do not cause any damage to the environment, they can easily place and remove from ground.

Fundaments Details

Easily assembled

Adjustable to any surface



D. Package Transport



Transport
package includes:

We ship to Europe

We ship to USA

the future of living



F. Package Foundation

Foundation
package includes:

We provide designs

We provide general contracting

the future of living

An aerial view of a modern, single-story house with a flat roof covered in solar panels. The house has large windows and a wooden deck with outdoor furniture. It is surrounded by a dense, lush garden with various plants and trees. The text 'L. Package Landscape' is overlaid on the top left of the image.

L. Package Landscape

Landscape
package includes:

We provide design

We provide general contractors

the future of living

P. Package Permitting

Permitting
package includes:

We provide design & documentation for permitting

We provide architects

the future of living

Our partners

Fundermax
For you to create

KIRCHNER

VETEDY
JAPAN

BERNER

SIGA

BECK
Beyond Factoring

nordpan
RUBNER

HARO
Endlich zuhause

ISOCELL

BASF
We create chemistry

Collano

FASCO INC.

kronospan

MAPEI

BOEN

BWP

mafell

POFIX

rothoblaas

FALCO
wood industry

BILBOURD TRUST



the future of living

sales@instabuilt.com

+383 38 600 615 / +49 72 312 059 970

www.instabuilt.com

Prishtina - Mitrovica Highway KM12
Millosheve, Obiliq, 10000 Kosova